

Identific

Similarity checker & AI detector

Powers the study, the research
& business processes

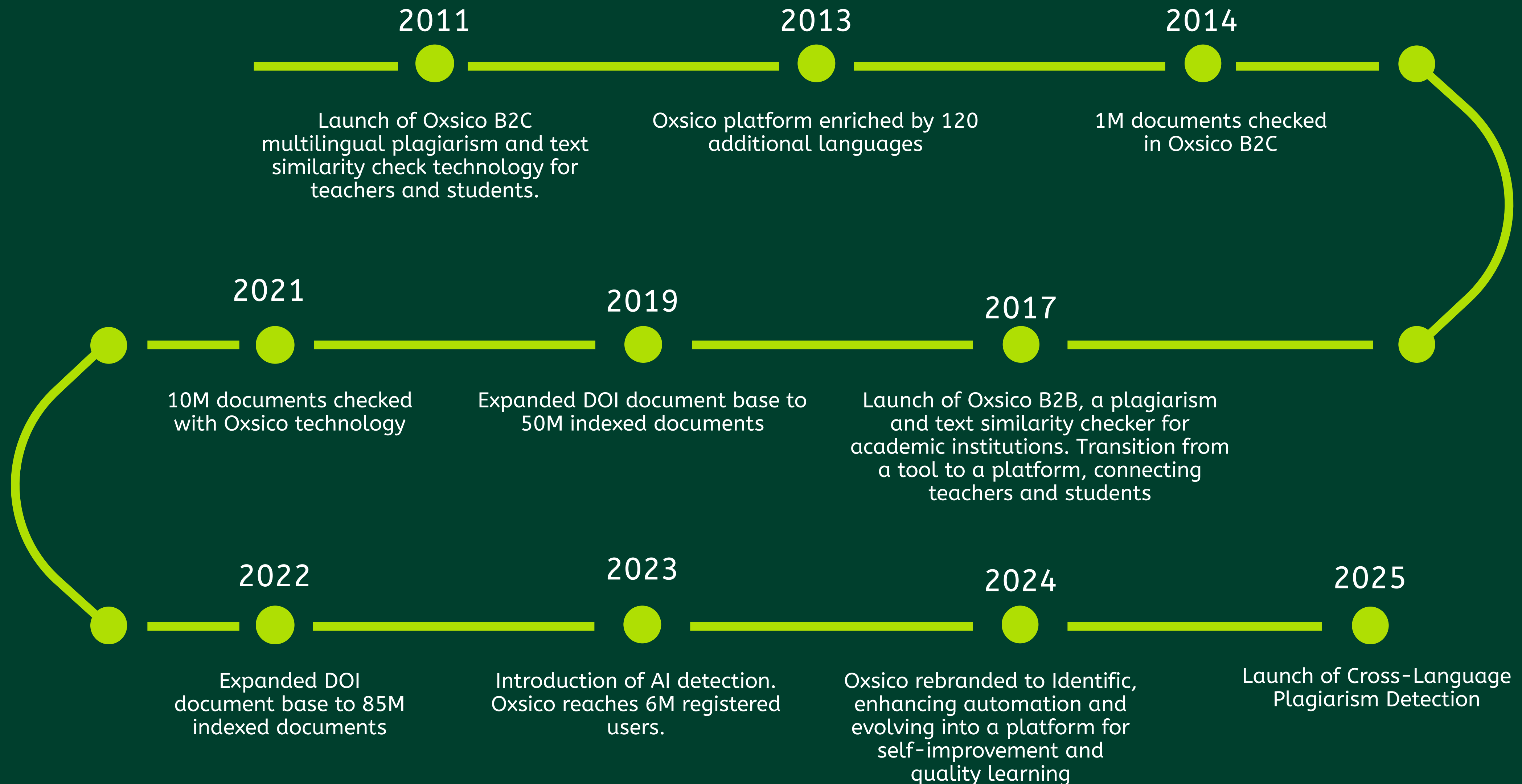




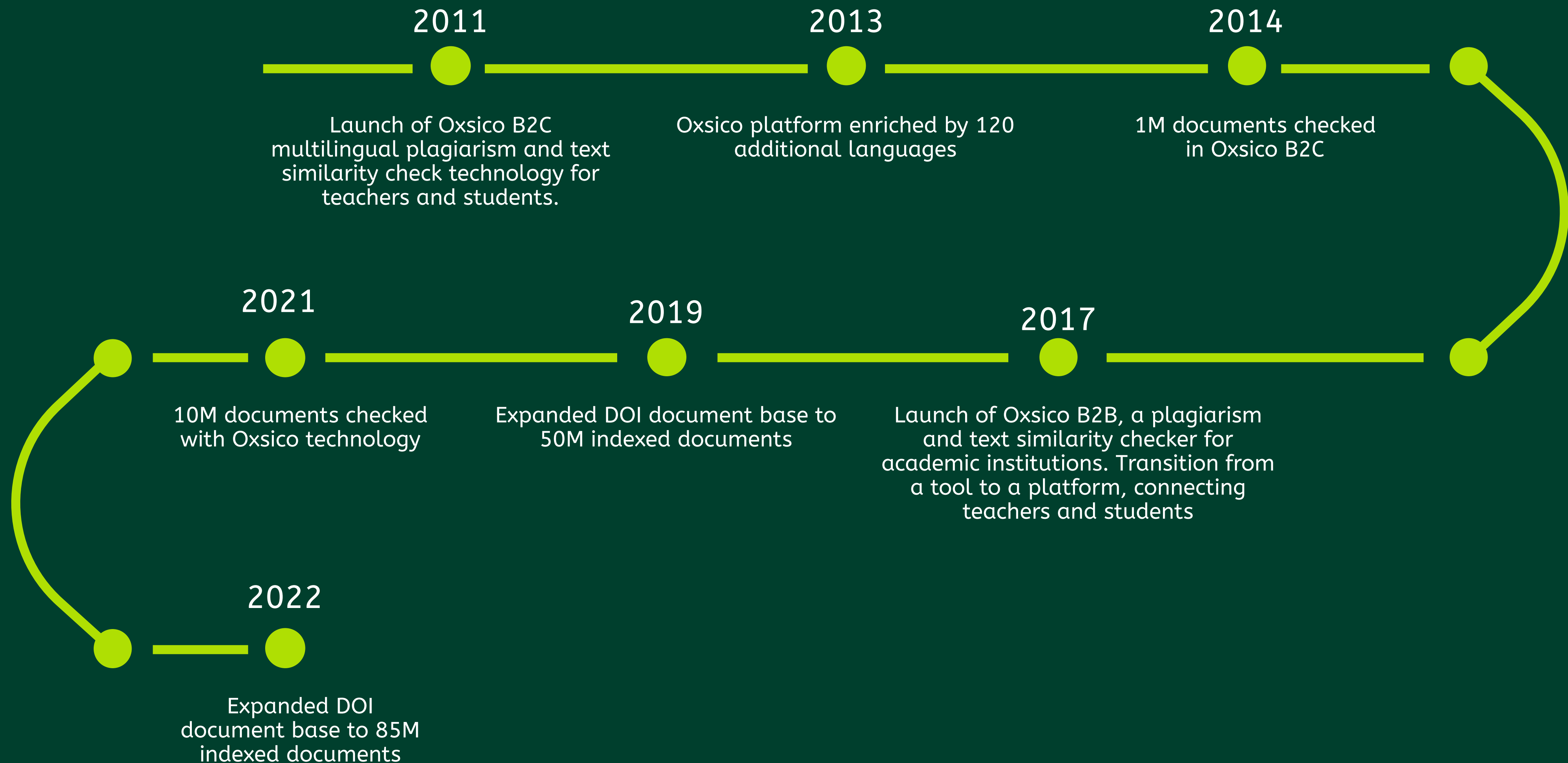
Lithuania



Company Timeline



Company Timeline



Identific

Text similarity check & AI detection platform

 **14 Yrs**

Of technology development and collection of comparative database

 **300M**

Comparative scholarly documents database

 **129**

Languages in text similarity check

 **6M**

Registered users

 **12K**

Indexed repositories

 **15M**

Documents checked with Identific products

129

Similarity check languages

Our text similarity detection algorithms work perfectly with a variety of writing systems including:

- ✓ Greek
- ✓ Latin
- ✓ Arabic
- ✓ Cyrillic
- ✓ Georgian
- ✓ Armenian
- ✓ Ge'ez script
- ✓ Brahmic family scripts
- ✓ Chinese
- ✓ Japanese
- ✓ Korean
- ✓ Vietnamese
- ✓ Nynorsk
- ✓ Bokmål



Additional functionality



**Cheating
Detection**



**OCR
recognition**



**Citation
Builder**



**Single Sign-On
(SSO)**



LTI Integration



**On-Demand
Customization**



**Control limitations
and delegate team
responsibilities**



Statistics tracking



**Full control of your
own database**



**GDPR & Accessibility
compliance**

Cheating detection

We employ various cheat-detection techniques to prevent the possibility of cheating.

✓ **Detection of letters from different script**

✓ **Inserting picture instead of text**

(Extract the text from images)

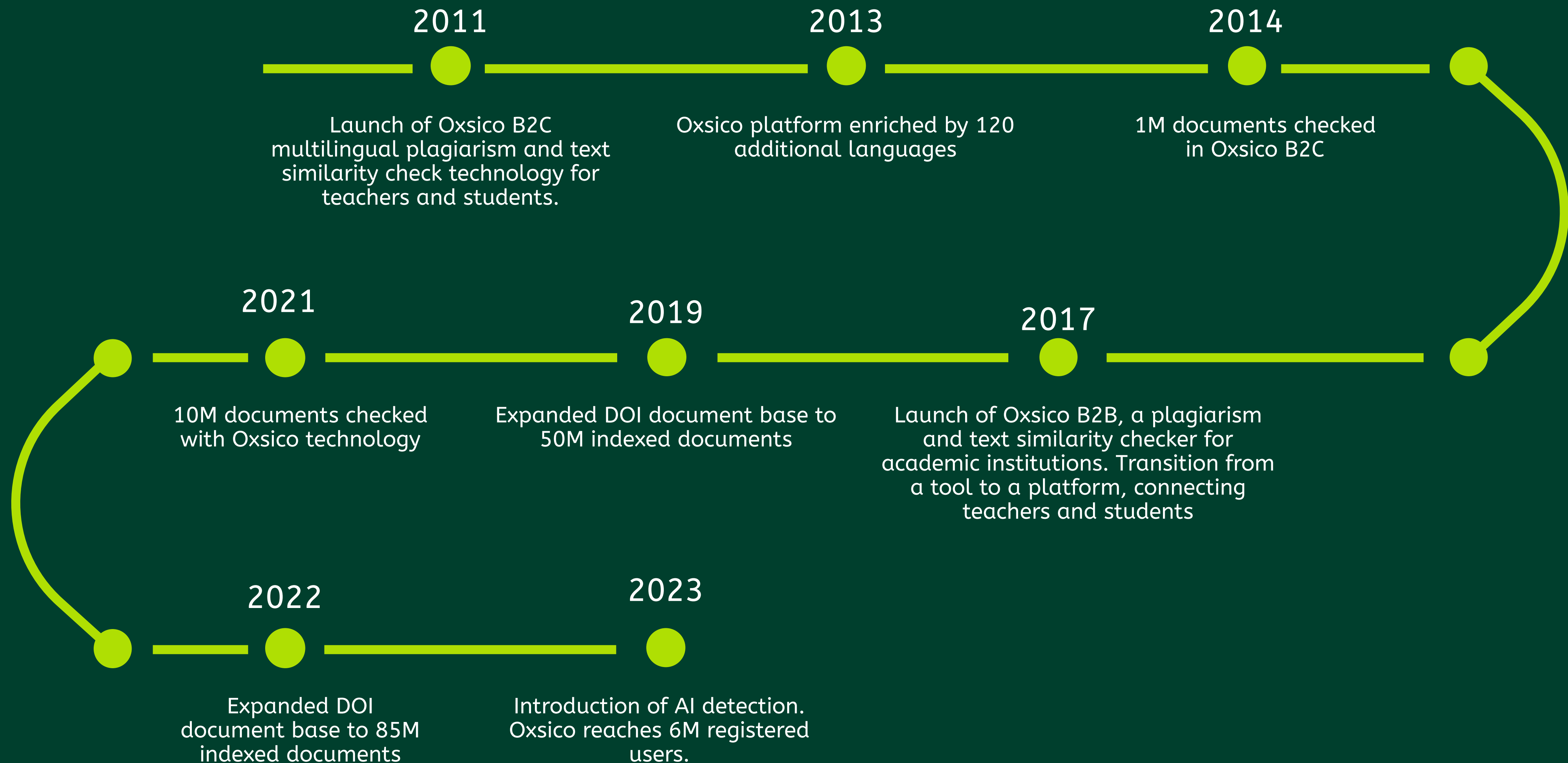
✓ **Contract cheating (stylometry)**

✓ **Inserting white letters instead of space**

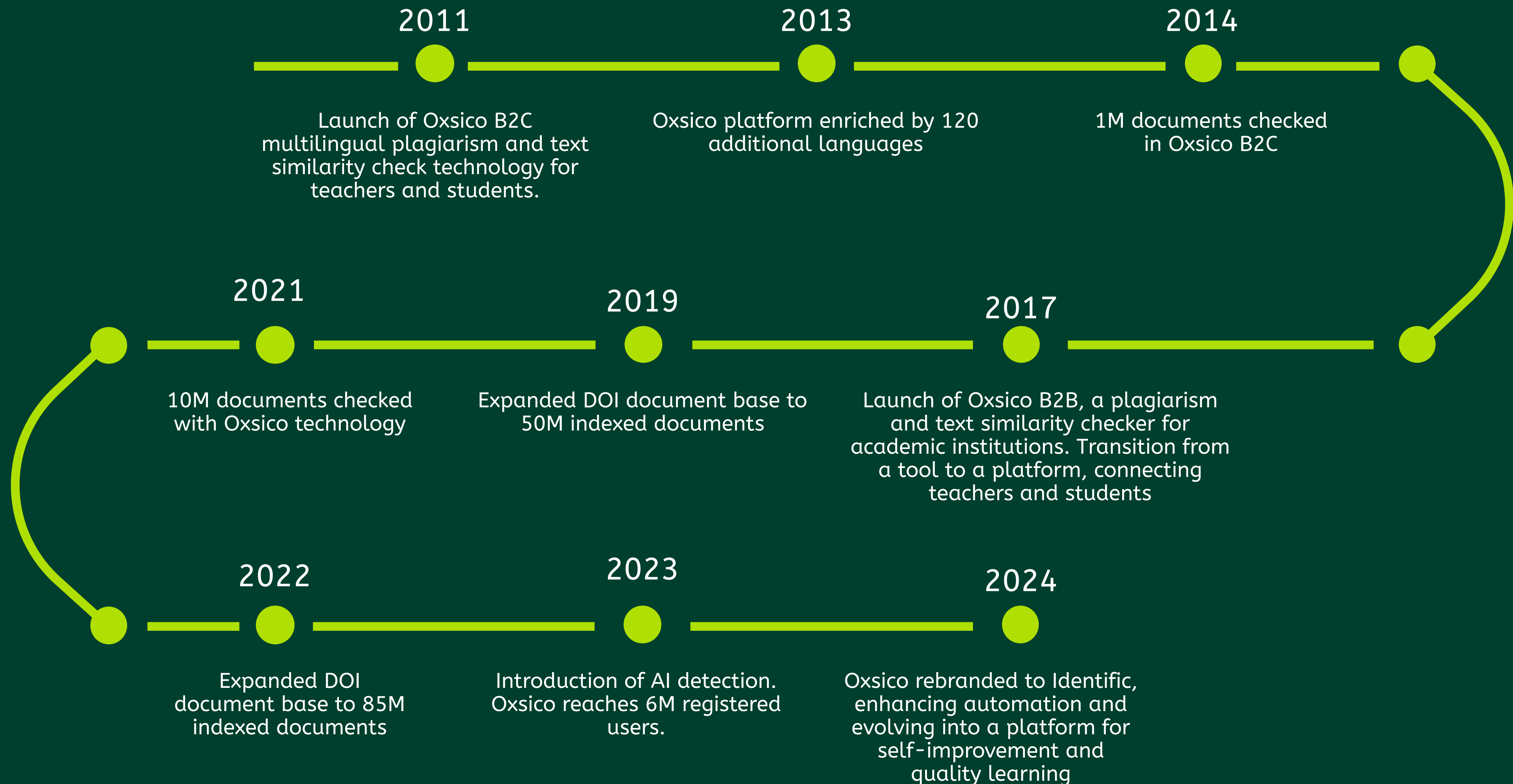
✓ **Other less frequent means**



Company Timeline



Company Timeline



Identific AI detection

✓ **99%
Accuracy**

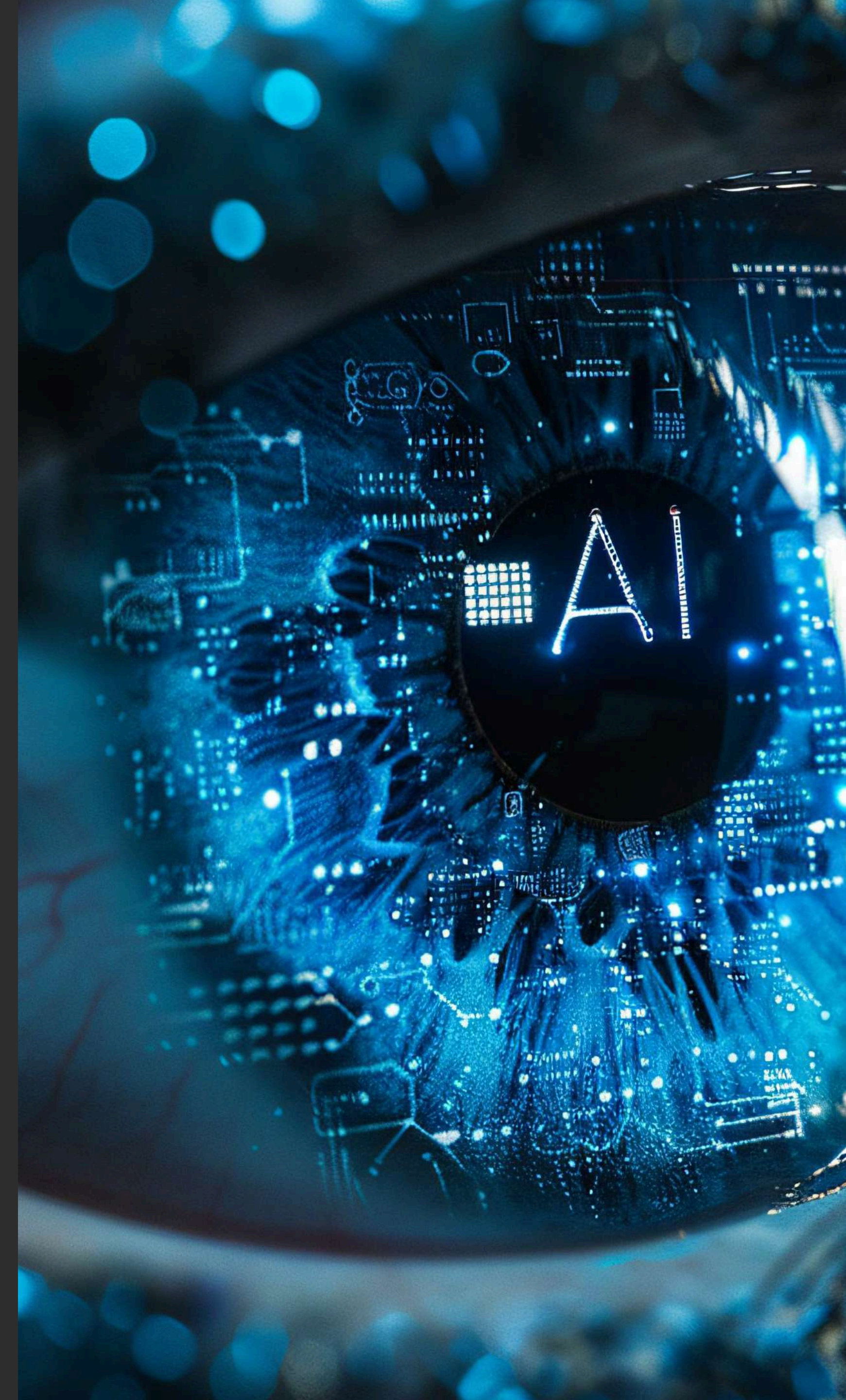
✓ **High
Performance**

✓ **Low false
positives**

✓ **56 supported
Languages**

✓ **Fast analysis**

✓ **Enhanced
Data Security**



56

Supported AI detection languages

English, Ukrainian, Lithuanian, French, German, Spanish, Italian, Portuguese, Dutch, Polish, Czech, Slovak, Hungarian, Romanian, Bulgarian, Serbian, Croatian, Slovenian, Finnish, Swedish, Danish, Norwegian, Icelandic, Greek, Turkish, Russian, Arabic, Hebrew, Persian (Farsi), Hindi, Bengali, Urdu, Thai, Vietnamese, Indonesian, Malay, Filipino (Tagalog), Chinese (Simplified), Chinese (Traditional), Japanese, Korean, Armenian, Georgian, Azerbaijani, Kazakh, Uzbek, Tamil, Telugu, Kannada, and Sinhala.



**Why is AI detection
so important?**



Average text length of uploaded academic papers

 **2022**

less than
5,000 words

 **2025**

more than
7,500 words

+50%

Texts are generated by AI more and more

2024: How is AI is used in schools in Italy, Spain and Germany?

Out of 3027 respondents

95%

Heard about generative artificial intelligence tools

Out of 2888 respondents

87%

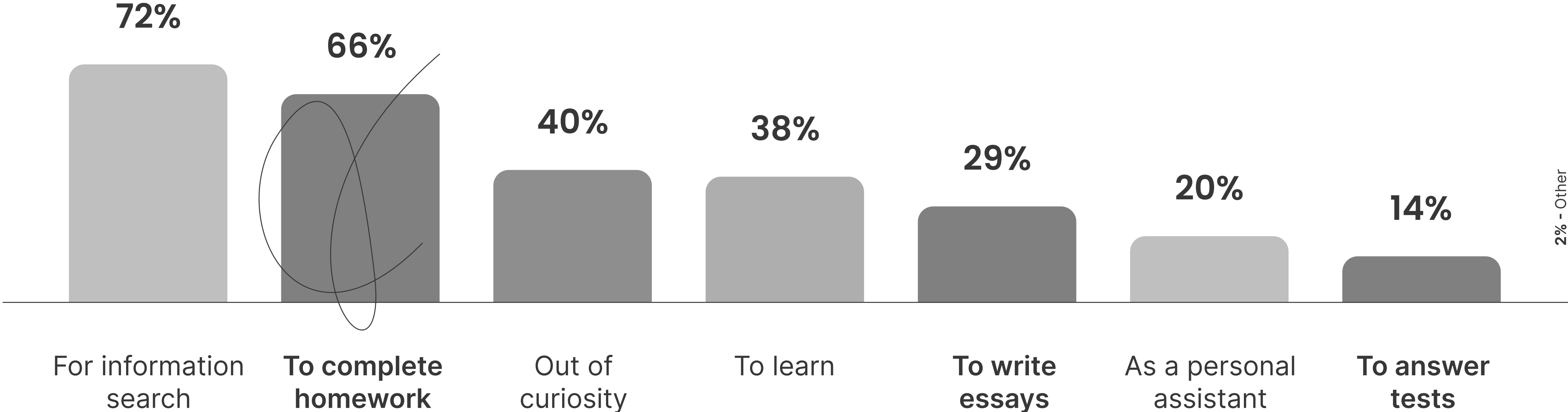
used at least one generative artificial intelligence tool

2024: How is AI is used in schools in Italy, Spain and Germany?

What they used it for?

Out of 2514 respondents

66% of all respondents used artificial intelligence tools for writing essays, compositions, or doing homework.



2025: How is AI is used in schools in Italy?

2024

Out of 1,007 respondents:

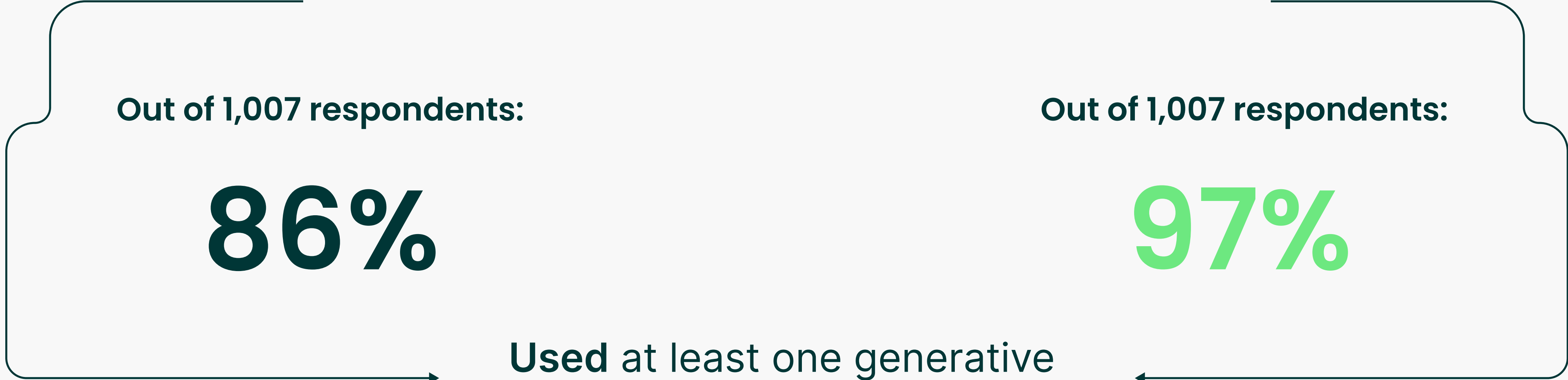
86%

Used at least one generative artificial intelligence tool

2025

Out of 1,007 respondents:

97%



2025: How is AI is used in schools in Italy?

2024

Out of 1,007 respondents:

65%

Used artificial intelligence tools for writing essays, compositions, or doing homework

2025

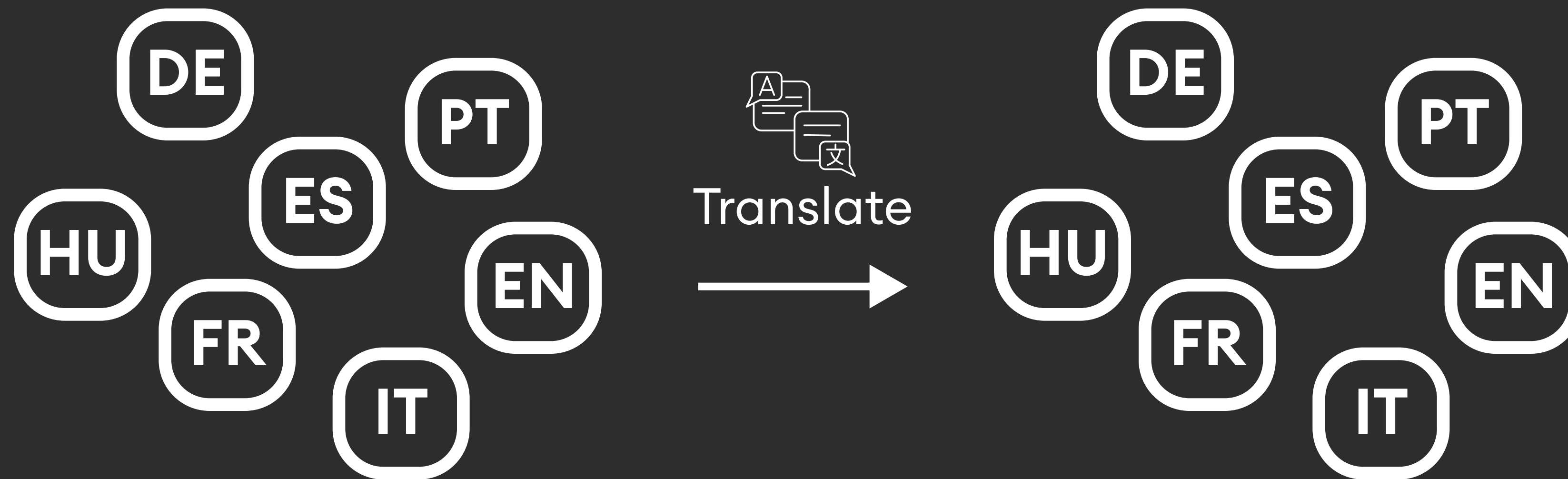
Out of 1,007 respondents:

75%

Fully Cross-Language Plagiarism Detection

The system checks any language against any other language, with no need for English as a bridge.

Submitted paper



Fully Cross-Language Plagiarism Detection

Example:

- A student writes a paper in Ukrainian. Is it possible to detect if the text was copied from Swedish, Spanish, English, or any other language?

Key problems resolved:

- **Answers the question:** Was this paper translated from any foreign source?
- The system detects “plagiarism of ideas”, focusing on the meaning of the text rather than wording. We use semantic analysis to make it work.

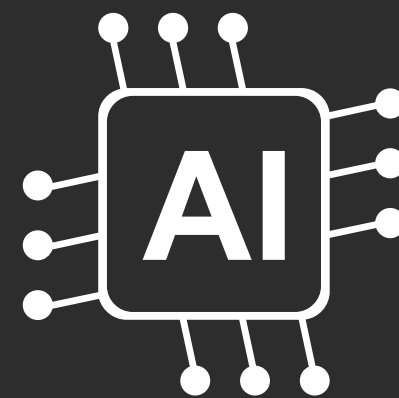
Key limitations:

- Longer processing

Identific Key Features



**Text similarity
check**



AI Detection



**Translated text
plagiarism**

Across the street from where Joseph stood, barely outside of the camera's view, is a building that connects him to another young black man who lived in St. Paul nearly a century ago. The building is Gordon Parks High School. Its namesake was a man who, as a photojournalist, became one of the mid-20th century's most influential interpreters of African American life and culture. The connection between Joseph and the school reveals much about the enduring nature of racial oppression in the United States and, at the same time, allows us to think about how that oppression and resistance to it have been represented in photography. Joseph's portrait, which I wrote about soon after Aguirre made it, captured the public's imagination. It quickly went viral on social media and attracted the attention of mainstream news outlets such as CNN. It's easy to see why. In the photograph, Joseph was incongruously dressed in an academic cap and gown, stylishly torn blue jeans, and basketball shoes, as if he were ready for both a graduation ceremony and the party

Similarity 93%

All Sources Internet DOI Database

45 sources found

10% arxiv.org
arxiv.org/pdf/2006.14636.pdf

2%

9.9% Why does this legendary...
www.nationalgeographic.co...

1%



Upcoming features

- ✓ Improved Paraphrasing Detection, (Q3, 2025)
- ✓ Fake Citation & Scholarly Articles Detection (Q4, 2025)

Identific

**Similarity
checker &
AI detector**